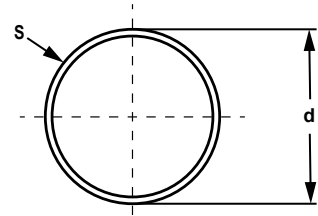


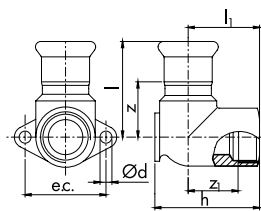
Maßzeichnungen Edelstahl-Rohrsystem

Edelstahlrohr



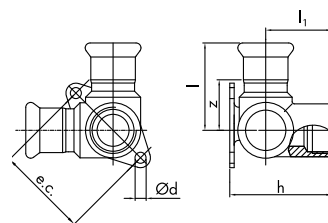
Abmessung	Art.-Nr.	d mm	s mm	l/m	kg/m
15	878 120 000	15,0	1,0	0,133	0,351
18	878 120 100	18,0	1,0	0,201	0,426
22	878 120 200	22,0	1,2	0,302	0,625
28	878 120 300	28,0	1,2	0,515	0,805
35	878 120 400	35,0	1,5	0,804	1,258
42	878 120 500	42,0	1,5	1,195	1,521
54	878 120 600	54,0	1,5	2,043	1,972
76,1	878 120 700	76,1	2,0	4,081	3,711
88,9	878 120 800	88,9	2,0	6,207	4,352
108	878 120 900	108,0	2,0	8,495	5,308

Wandwinkel



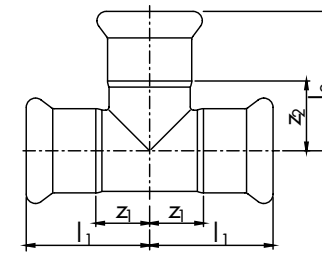
Abmessung	Art.-Nr.	z ₁ mm	h mm	z mm	l ₁ mm	l mm	Ød mm	e.c. mm
15 - Rp 1/2"	878 150 070	17	44	28	30	50	5	34
18 - Rp 1/2"	878 150 170	17	44	30	30	50	5	34
22 - Rp 3/4"	878 150 270	20	52	33	34	55	6	40

Wandwinkel mit V-Durchgang



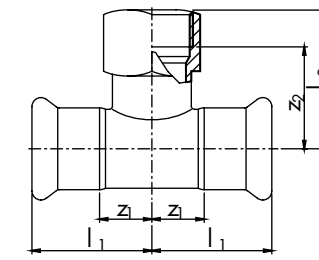
Abmessung	Art.-Nr.	z mm	h mm	l ₁ mm	l mm	Ød mm	e.c. mm
15 - Rp 1/2"	878 150 050	28	44	50	30	5	39

T-Stück



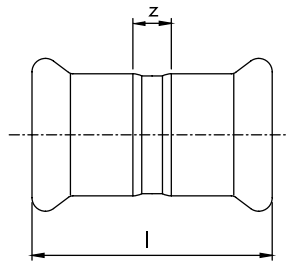
Abmessung	Art.-Nr.	z ₁ mm	z ₂ mm	l ₁ mm	l ₂ mm
15	878 160 000	12	19	32	39
18 - 15 - 18	878 160 101	14	20	34	40
18	878 160 111	14	19	34	39
22 - 15 - 22	878 160 202	16	22	37,5	42
22 - 18 - 22	878 160 212	16	22	37,5	42
22	878 160 222	16	22	37,5	43
28 - 15 - 28	878 160 303	19	25	41	45
28 - 18 - 28	878 160 313	19	25	41	45
28 - 22 - 28	878 160 323	19	25	41	46,5
28	878 160 333	19	25	41	47
35 - 15 - 35	878 160 404	24	28	50	48
35 - 18 - 35	878 160 414	24	28	50	48
35 - 22 - 35	878 160 424	24	28	50	49
35 - 28 - 35	878 160 434	24	28	50	51
35	878 160 444	24	27	50	53
42 - 18 - 42	878 160 515	27	31	57	52
42 - 22 - 42	878 160 525	27	31	57	52
42 - 28 - 42	878 160 535	27	31	57	53
42 - 35 - 42	878 160 545	27	31	57	57
42	878 160 555	27	30	57	60
54 - 22 - 54	878 160 626	34	37,5	68	58
54 - 28 - 54	878 160 636	34	38	68	60
54 - 35 - 54	878 160 646	34	37	68	63
54 - 42 - 54	878 160 656	34	37	68	67
54	878 160 666	34	37	68	71
76,1 - 28 - 76,1	878 160 737	59	49	113	72
76,1 - 35 - 76,1	878 160 747	59	48	113	74
76,1 - 42 - 76,1	878 160 757	59	46	113	76
76,1 - 54 - 76,1	878 160 767	59	46,7	113	83
76,1	878 160 777	59	55	113	110
88,9 - 76,1 - 88,9	878 160 878	72	63	128	115
88,9	878 160 888	72	69	128	128
108 - 76,1 - 108	878 160 979	81	73	150	126,5
108	878 160 999	81	85	150	154

T-Stück mit Abgang Rp-Innengewinde

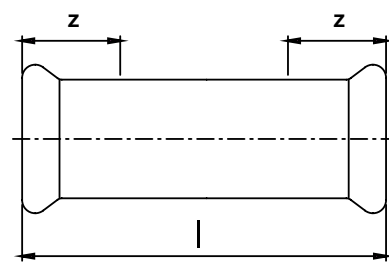


Abmessung	Art.-Nr.	z ₁ mm	z ₂ mm	l ₁ mm	l ₂ mm
15 - Rp 1/2" - 15	878 162 050	12	23	32	36
18 - Rp 1/2" - 18	878 162 151	14	24	34	37
22 - Rp 1/2" - 22	878 162 252	16	26	37,5	39
28 - Rp 1/2" - 28	878 162 353	19	29	41	42
28 - Rp 3/4" - 28	878 162 363	19	31	41	46
35 - Rp 1/2" - 35	878 162 454	24	32	50	45
35 - Rp 3/4" - 35	878 162 464	24	35	50	50
42 - Rp 1/2" - 42	878 162 555	27	35	57	48
42 - Rp 3/4" - 42	878 162 565	27	37	57	52
54 - Rp 1/2" - 54	878 162 656	34	41	68	55
54 - Rp 3/4" - 54	878 162 666	34	43	68	58
76,1 - Rp 3/4" - 76,1	878 162 767	59	56	113	71
88,9 - Rp 3/4" - 88,9	878 162 868	70	63	128	78
108 - Rp 3/4" - 108	878 162 969	81	72	150	87

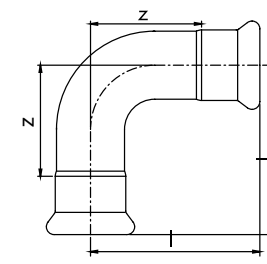
Maßzeichnungen Edelstahl-Rohrsystem

Kupplung


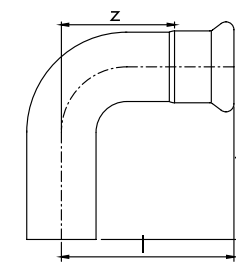
Abmessung	Art.-Nr.	z mm	l mm
15	878 140 000	8	49,0
18	878 140 110	8	50,0
22	878 140 220	8	50,5
28	878 140 330	8	55,0
35	878 140 440	18	70,0
42	878 140 550	18	78,0
54	878 140 660	18	85,5
76,1	878 140 770	33	140,5
88,9	878 140 880	45	160,0
108	878 140 990	58	197,0

Schiebekupplung


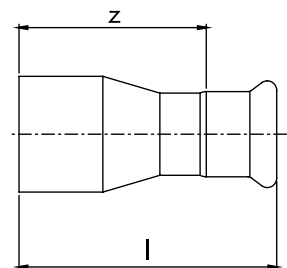
Abmessung	Art.-Nr.	z mm	l mm
15	878 140 001	27,5	80
18	878 140 111	27,5	80
22	878 140 221	19,5	71
28	878 140 331	22,0	84
35	878 140 441	26,0	99
42	878 140 551	30,0	114
54	878 140 661	34,0	136
76,1	878 140 771	54,0	226
88,9	878 140 881	58,0	255
108	878 140 991	71,5	300

Bogen 90°


Abmessung	Art.-Nr.	z mm	l mm
15	878 174 000	28,0	48,0
18	878 174 110	32,0	52,0
22	878 174 220	40,0	61,0
28	878 174 330	49,0	71,5
35	878 174 440	48,0	74,0
42	878 174 550	56,0	86,0
54	878 174 660	71,5	105,5
76,1	878 174 770	123,5	177,0
88,9	878 174 880	123,0	181,0
108	878 174 990	140,0	214,0

Bogen 90° I/A


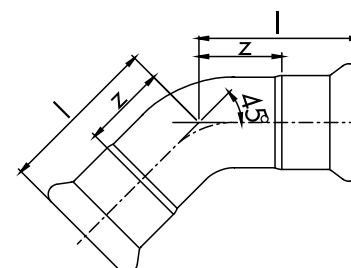
Abmessung	Art.-Nr.	z mm	h mm	l mm
15	878 174 001	28,0	67,0	48,0
18	878 174 111	32,0	65,0	52,0
22	878 174 221	40,0	74,0	61,0
28	878 174 331	49,0	82,0	71,5
35	878 174 441	48,0	85,0	74,0
42	878 174 551	56,0	96,5	86,0
54	878 174 661	71,5	113,5	105,0
76,1	878 174 771	123,5	195,0	177,0
88,9	878 174 881	123,0	202,0	181,0
108	878 174 991	140,0	240,0	214,0

Reduzierstück


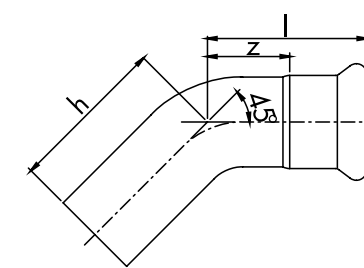
Abmessung	Art.-Nr.	z mm	l mm
18 - 15	878 140 100	42,0	62
22 - 15	878 140 200	44,0	64
22 - 18	878 140 210	40,0	60
28 - 15	878 140 300	48,0	68
28 - 18	878 140 310	46,0	66
28 - 22	878 140 320	45,5	65
35 - 18	878 140 410	57,0	77
35 - 22	878 140 420	61,5	82,5
35 - 28	878 140 430	52,0	74
42 - 22	878 140 520	66,5	88
42 - 28	878 140 530	60,0	82
42 - 35	878 140 540	62,0	88
54 - 28	878 140 630	71,0	93
54 - 35	878 140 640	75,0	101

Reduzierstück


Abmessung	Art.-Nr.	z mm	l mm
54 - 42	878 140 650	71	101
76,1 - 54	878 140 760	98	132
88,9 - 76,1	878 140 870	131	185
108 - 76,1	878 140 970	145	198
108 - 88,9	878 140 980	148	206

Bogen 45°


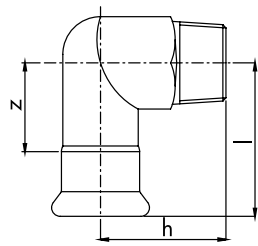
Abmessung	Art.-Nr.	z mm	l mm
15	878 175 000	14,5	34,5
18	878 175 110	16,0	36,0
22	878 175 220	20,0	41,0
28	878 175 330	24,0	46,0
35	878 175 440	23,4	49,4
42	878 175 550	26,7	56,7
54	878 175 660	33,0	66,5
76,1	878 175 770	57,5	111,0
88,9	878 175 880	56,0	114,0
108	878 175 990	64,0	138,0

Bogen 45° I/A


Abmessung	Art.-Nr.	z mm	h mm	l mm
15	878 175 001	14,5	47,0	34,5
18	878 175 111	16,0	48,5	36,0
22	878 175 221	20,0	52,0	41,0
28	878 175 331	24,0	58,0	46,0
35	878 175 441	23,4	60,4	49,4
42	878 175 551	26,7	69,7	56,7
54	878 175 661	33,0	75,4	66,5
76,1	878 175 771	57,5	128,0	111,0
88,9	878 175 881	56,0	135,0	114,0
108	878 175 991	64,0	169,0	138,0

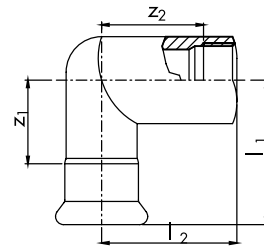
Maßzeichnungen Edelstahl-Rohrsystem

Winkelübergang mit R-Außengewinde



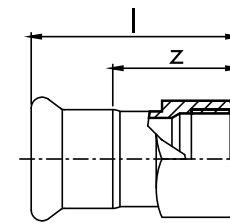
Abmessung	Art.-Nr.	z mm	h mm	l mm
15 - R 1/2"	878 174 050	37	37	57
18 - R 1/2"	878 174 150	37	39	57
22 - R 3/4"	878 174 260	39	46	61
28 - R 1"	878 174 370	44	54	67
35 - R 1 1/4"	878 174 480	49	63	75
54 - R 2"	878 174 600	60	78	93

Winkelübergang mit Rp-Innengewinde



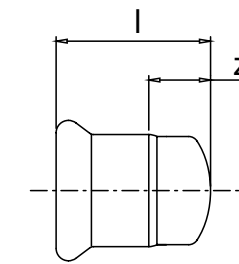
Abmessung	Art.-Nr.	z ₁ mm	z ₂ mm	l ₁ mm	l ₂ mm
15 - Rp 1/2"	878 172 050	37	24	57	37
18 - Rp 1/2"	878 172 150	37	26	57	39
22 - Rp 3/4"	878 172 260	39	31	61	46
28 - Rp 1"	878 172 370	44	37	67	54
35 - Rp 1 1/4"	878 172 480	49	44	75	63

Übergang mit Rp-Innengewinde



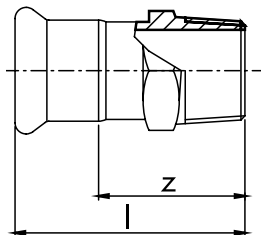
Abmessung	Art.-Nr.	z mm	l mm
15 - Rp 1/2"	878 142 050	34,0	54,0
15 - Rp 3/4"	878 142 060	38,0	58,0
18 - Rp 1/2"	878 142 150	34,0	54,0
18 - Rp 3/4"	878 142 160	38,0	58,0
22 - Rp 3/4"	878 142 260	38,0	59,0
22 - Rp 1"	878 142 270	39,5	60,0
28 - Rp 1"	878 142 370	38,5	60,5
35 - Rp 1"	878 142 470	38,0	64,0
35 - Rp 1 1/4"	878 142 480	43,0	69,0
42 - Rp 1 1/4"	878 142 580	42,0	72,0
42 - Rp 1 1/2"	878 142 590	47,0	77,0
54 - Rp 1 1/2"	878 142 690	47,0	81,0
54 - Rp 2"	878 142 600	56,0	90,0
76,1 - Rp 2 1/2"	878 142 710	75,5	129,0
88,9 - Rp 3"	878 142 820	60,5	118,0

Kappe



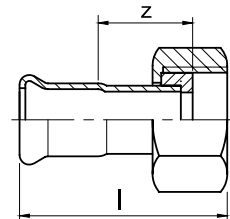
Abmessung	Art.-Nr.	z mm	l mm
15	878 143 000	16,0	36
18	878 143 001	16,0	36
22	878 143 002	21,5	41,5
28	878 143 003	20,0	42
35	878 143 004	25,0	51
42	878 143 005	24,0	54
54	878 143 006	25,0	59
76,1	878 143 007	36,0	90
88,9	878 143 008	45,0	102
108	878 143 009	56,0	125

Übergang mit R-Außengewinde



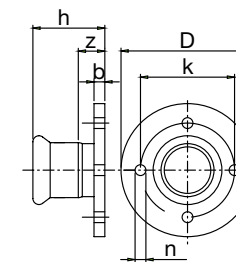
Abmessung	Art.-Nr.	z mm	l mm
15 - R 1/2"	878 141 050	33,5	53,5
15 - R 3/4"	878 141 060	37,5	57,5
18 - R 1/2"	878 141 150	33,5	53,5
18 - R 3/4"	878 141 160	38,0	58,0
22 - R 1/2"	878 141 250	33,5	54,5
22 - R 3/4"	878 141 260	37,5	58,5
22 - R 1"	878 141 270	41,0	62,0
28 - R 3/4"	878 141 360	38,0	60,0
28 - R 1"	878 141 370	41,0	63,0
35 - R 1"	878 141 470	41,0	67,0
35 - R 1 1/4"	878 141 480	45,0	71,0
42 - R 1 1/4"	878 141 580	45,0	75,0
42 - R 1 1/2"	878 141 590	48,0	78,0
54 - R 1 1/2"	878 141 690	48,0	82,0
54 - R 2"	878 141 600	50,0	84,0
76,1 - R 2 1/2"	878 141 710	74,0	127,5
88,9 - R 3"	878 141 820	86,0	142,0
108 - R 4"	878 141 930	73,0	155,0

Übergang mit Überwurfmutter



Abmessung	Art.-Nr.	z mm	l mm
15 - G 1/2"	878 143 050	34,5	63,5
18 - G 3/4"	878 143 160	21,5	48,0
22 - G 3/4"	878 143 260	36,5	65,0
28 - G 1"	878 143 370	39,5	73,0
35 - G 1 1/4"	878 143 480	38,0	76,0
42 - G 1 1/2"	878 143 590	41,0	82,5
54 - G 2"	878 143 600	47,0	91,0

Pressflansch



Abmessung	Art.-Nr.	z mm	D mm	k mm	h mm	b mm	n mm
42 - DN 40	878 144 005	44	150	110	74	18	4
54 - DN 50	878 144 006	51	165	125	85	18	4
76,1 - DN 65	878 144 007	78	185	145	132	20	4
88,9 - DN 80	878 144 008	91	200	160	146	20	8
108 - DN 100	878 144 009	100	220	180	169	20	8