

# Apartment Supply Station for DHW – UFH - Radiators – 2 pipe system

Apartment station for domestic hot water, radiator and underfloor heating supply in a 2-pipe system, desired hot water temperature selectable by electronic controller between 45° and 60° C, pipes and heat exchanger made of stainless steel, generously dimensioned for low pressure losses, maximum hot water withdrawal quantity 22 l/min at 15 K temperature difference between flow heating and hot water temperature, high temperature outlet for connection of radiators, UFH fixed value control group adjustable from 20° to 50° C. Fittings for the installation of cold water and heat quantity meters, installation location for UFH distributor 3- to 10-fold for direct connection to the fixed value control group, installation space for terminal strip.

**Optional:** Installation space for UFH distributor 11- and 12-fold; balancing valve in heating return; plate heat exchanger stainless steel brazed on request. Dimensions flush-mounted cabinet\* (HxVxD): 1180 mm x 898 mm x (variable) 120-160 mm.

Apartment Supply Station DHW-UFH -Radiators-2-pipes



\*wall-mounted version on request

RG 25

Description	Art.-no.	HW output l/min.
DHW 22-UFH-RAD-2 pipes	999 686 422	22

**Note:** PRINETO UFH distributor is not included in the scope of delivery. Price and delivery time of apartment station on request.

Status 01/2021 – reproduction, also in extracts supply to approval.  
© by IVT GmbH & Co. KG-Printed in Germany



## IVT Apartment Supply Stations

Hygienic. Effective. Comfortable.

Gewerbering Nord 5  
D-91189 Rohr  
Export: + 49 9876 9786 42  
export@ivt-group.com  
www.ivt-group.com





## Advantages:

- Hygienically perfect drinking water due to „just in time“ preparation
- Elimination of legionella growth
- Short hot water pipes, no circulation necessary
- Thus reduced heat losses
- Precise billing of consumption due to meters in each station
- No annual inspection for legionella in large systems
- Hot water temperatures < 60° C possible (up to 2 flats)
- Reduction from 5 to 3 risers, smaller ceiling penetrations

## IVT Apartment Supply Stations

Hygienic. Effective. Comfortable.

Fresh water apartment stations are used for the preparation of hot water and, depending on the equipment, for the supply of surface and radiator heating. The hot water preparation functions according to the continuous flow principle and ensures a constant, comfortable and hygienically flawless hot water supply.

The heating of the DHW takes place exclusively when required via a stainless steel plate heat exchanger. The interaction of the flow rate sensor, temperature sensors and the PWM charging pump ensures that the specified hot water temperature is controlled.

The special electronic controller ensures that the hot water temperature is maintained precisely, even when flow temperatures fluctuate.

A thermostatically adjustable fixed value control set provides the appropriate flow temperature for supplying the surface heating.

## Properties at a glance:

- Hot water temperature electronically controlled
- Stainless steel piping
- Stainless steel plate heat exchanger, copper brazed
- Flush-mounted cabinet made of hot-dip galvanized sheet steel
- Door and frame as well as screed baffle powder coated, white RAL 9016

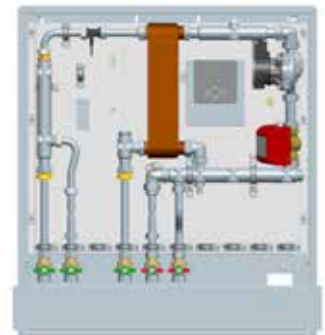
## Apartment Supply Station DHW

Domestic hot water station. Desired hot water temperature selectable by electronic controller between 45° and 60° C, pipes and heat exchanger made of stainless steel, generously dimensioned for low pressure losses, maximum hot water withdrawal quantity 22 l/min at 15 K temperature difference between flow heating and hot water temperature. Fitting parts for the installation of cold water and heat quantity meter.

**Optional:** Balancing valve in heating return; stainless steel brazed plate heat exchanger on request.

Dimensions flush-mounted cabinet\* (HxVxD): 860 mm x 748 mm x (variable) 120-160 mm.

Apartment station DHW 22



\*wall-mounted version on request

RG 25

Description	Art.-no.	HW output l/min.
WWB 22	999 686 122	22

Price and delivery time of apartment station on request.